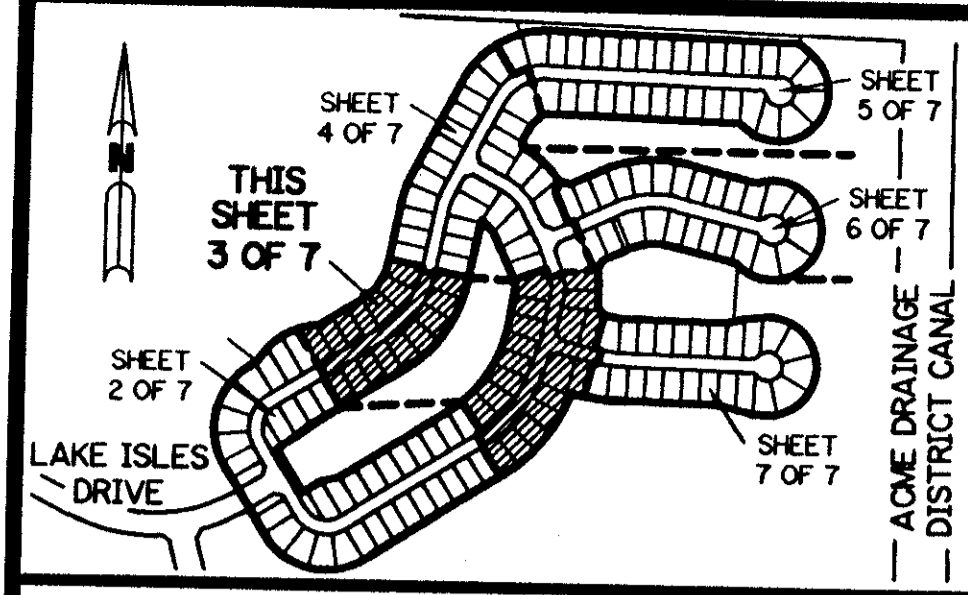


A PART OF THE ORANGE POINT P.U.D.

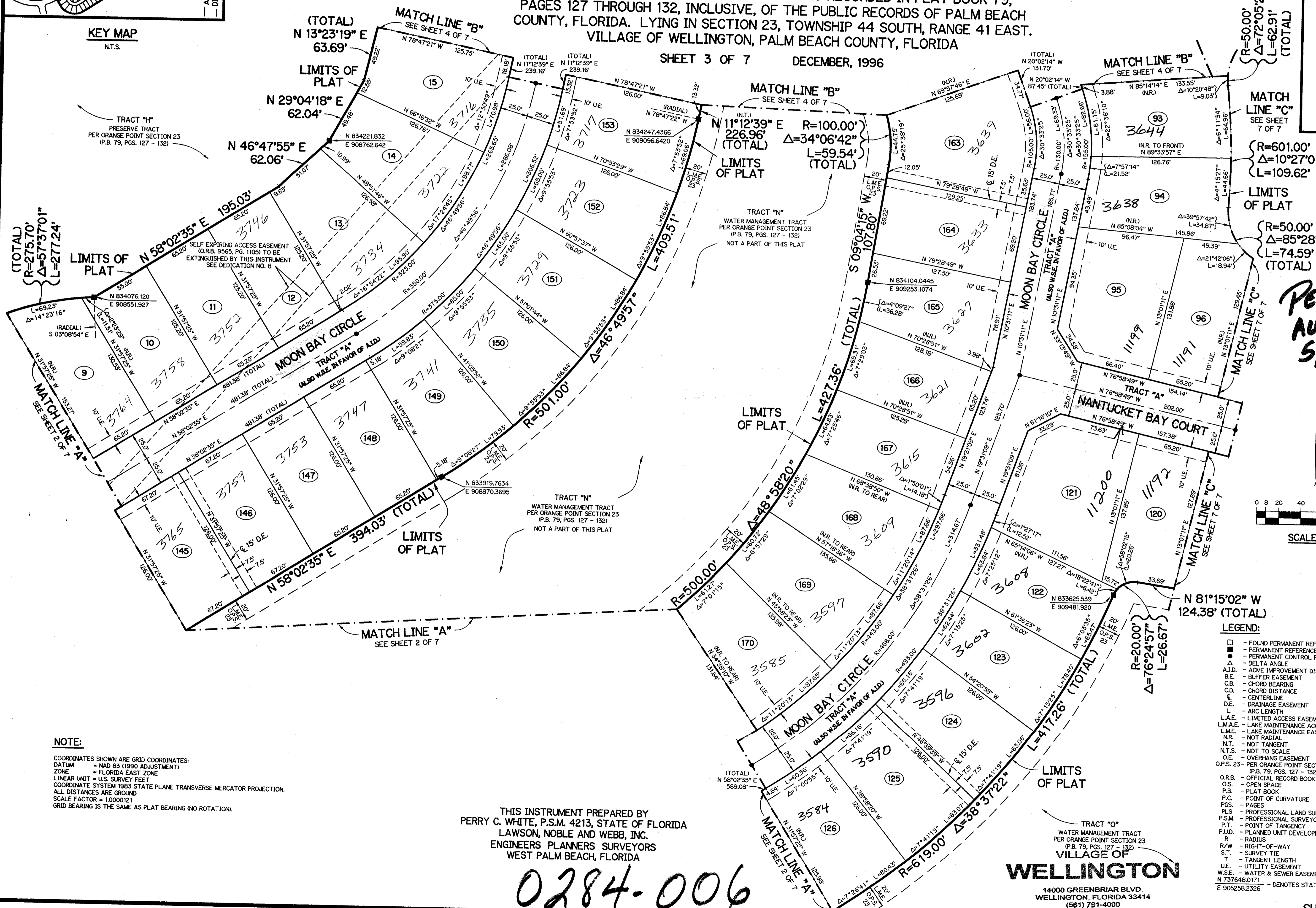
ORANGE POINT - TRACT "B"

BEING A REPLAT OF ALL OF TRACT "B" ACCORDING TO THE PLAT OF ORANGE POINT SECTION 23 AS RECORDED IN PLAT BOOK 79, PAGES 127 THROUGH 132, INCLUSIVE, OF THE PUBLIC RECORDS OF PALM BEACH COUNTY, FLORIDA. LYING IN SECTION 23, TOWNSHIP 44 SOUTH, RANGE 41 EAST. VILLAGE OF WELLINGTON, PALM BEACH COUNTY, FLORIDA

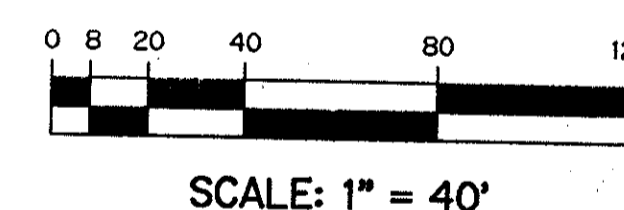
SHEET 3 OF 7 DECEMBER, 1996



KEY MAP N.T.S.



PET. 84-98
ALOC. #0001
5/2/16



- LEGEND:**
- - FOUND PERMANENT REFERENCE MONUMENT, PLS #273
 - - PERMANENT REFERENCE MONUMENT, PLS #4213
 - ▲ - PERMANENT CONTROL POINT, PLS #4213
 - △ - DELTA ANGLE
 - AD - ACME IMPROVEMENT DISTRICT
 - B.E. - BUFFER EASEMENT
 - C.B. - CHORD BEARING
 - C.D. - CHORD DISTANCE
 - C. - CENTERLINE
 - D.E. - DRAINAGE EASEMENT
 - L - ARC LENGTH
 - L.A.E. - LIMITED ACCESS EASEMENT
 - L.M.A.E. - LAKE MAINTENANCE ACCESS EASEMENT
 - L.M.E. - LAKE MAINTENANCE EASEMENT
 - NR - NOT RADIAL
 - N.T. - NOT TANGENT
 - N.T.S. - NOT TO SCALE
 - O.E. - OVERHANG EASEMENT
 - O.P.S. 23 - PER ORANGE POINT SECTION 23 (P.B. 79, PGS. 127 - 132)
 - OR.B. - OFFICIAL RECORD BOOK
 - O.S. - OPEN SPACE
 - P.B. - PLAT BOOK
 - P.C. - POINT OF CURVATURE
 - P.O.S. - POINT OF SIGHT
 - PLS - PROFESSIONAL LAND SURVEYOR
 - P.S.M. - PROFESSIONAL SURVEYOR AND MAPPER
 - P.T. - POINT OF TANGENCY
 - P.U.D. - PLANNED UNIT DEVELOPMENT
 - R - RADIUS
 - R/W - RIGHT-OF-WAY
 - S.T. - SURVEY TIE
 - T - TANGENT LENGTH
 - U.E. - UTILITY EASEMENT
 - W.S.E. - WATER & SEWER EASEMENT
 - N 73°48'01\"/>

NOTE:

COORDINATES SHOWN ARE GRID COORDINATES:
 DATUM = NAD 83 (1990 ADJUSTMENT)
 ZONE = FLORIDA EAST ZONE
 LINEAR UNIT = U.S. SURVEY FEET
 COORDINATE SYSTEM 1983 STATE PLANE TRANSVERSE MERCATOR PROJECTION.
 ALL DISTANCES ARE GROUND
 SCALE FACTOR = 1.0000121
 GRID BEARING IS THE SAME AS PLAT BEARING (NO ROTATION).

THIS INSTRUMENT PREPARED BY
 PERRY C. WHITE, P.S.M. 4213, STATE OF FLORIDA
 LAWSON, NOBLE AND WEBB, INC.
 ENGINEERS PLANNERS SURVEYORS
 WEST PALM BEACH, FLORIDA

0284-006

WELLINGTON
 14000 GREENBRIAR BLVD.
 WELLINGTON, FLORIDA 33414
 (561) 791-4000

80/3

SUBDIVISION # 11000
 FLOOD ZONE 1000
 QUAD # 43
 SE 79-288
 PUD NAME Wellington